



FlashLink[®] NOW

Models 23005 & 23008

Real-Time Logger

Activation and Installation



UBQ Network: New Shipment

- Before the device is activated, verify a new shipment has been set up in the UBQ Network web portal.
- Go ubq.network and log in to your account.
- Make sure data is entered into these fields.
 - Purchase Order
 - Shipper
 - Carrier
 - Receiver
 - Product
 - Trip Number



Enter email address

Search

Before Activation

- Fill out the shipping label below the logger on the shipping card.
- Peel off the barcode label with trip ID number from the Real-Time Logger.
- Stick the barcode label onto the shipping document.



FlashLink NOW
Real-Time Logger

34.3°F
4G/5G

START

1. Peel off the barcode label with trip ID number from the Real-Time Logger.

2. Stick the barcode label onto the shipping document.

UBQ Network
DeltaTrak

Walmart sam's club

Real-Time Logger

FlashLink NOW

Place the logger on the 2nd pallet from the rear of the trailer, 2/3 of the way up the pallet.

Place the logger on the 2nd pallet from the rear of the trailer, 2/3 of the way up the pallet.

UBQ Network



Go to ubq.network and log in to search your shipment.

STRAIGHT BILL OF LADING - SHORT FORM

Carrier Name: Big Red Trucking		Phone: SHIPMENT IDENTIFICATION NO	
Carrier Address: 456 Main Street		Date: BHT-00000011	
City: El Paso		FREIGHT BILL NO	
State and Zip: TX 79003		85-000004	
SAC: DUNS		TRAILER CAR NO	
To: Walmart		BT-14685656565	
Cosignee: 2010 Wellford SC CDC		PURCHASE ORDER NUMBER	
Address: 1000 Fort Prince Blvd		WM-6548-05	
City: Wellford			
State and Zip: South Carolina 29385			
FROM: Avocado Express			
SHIPPER'S INTERNAL DATA			
Shipper Address: 81-2034 Stanley Blvd			
City: El Paso			
State and Zip: TX 79010			
Shipping Units	HD	Article, Special Marks and Exemptions	Code Weight Rate Charges
918		Cartons	
		20 Pallets	
		Pallets Avocados	

3. Place the barcode label onto the shipping document.

Activation

- Press and hold the **START** button until the LCD screen displays
 - Recording icon **•R**
 - Battery strength icon 
 - Current temperature
 - Signal strength icon 
 - Displayed when cellular networks are available
- The LCD will clear, except for the flashing **•R** Recording icon which will continue to flash for 5 minutes. Then the LCD will shut off to conserve battery power.



Note: If only the battery icon is visible, the logger is not activated. Return to Step 1.

3. Switch between °C and °F on the LCD by double pressing on the **START** button.



Confirm Activation

To verify the logger is active before shipping, give one short press on the **START** button. The LCD will display **R** Recording icon, battery strength icon, and temperature reading.



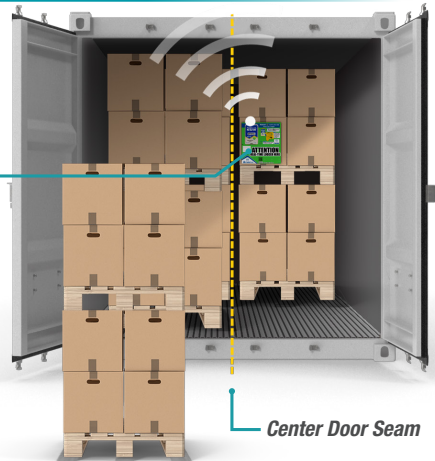
Signal strength icon will be displayed when there is connection to a cellular network.



The LCD will turn off to conserve battery power.

Device Placement on a Pallet

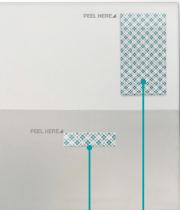
1. Peel the paper backing off the adhesive tape on the back of the shipping card.
2. Attach shipping card to the 2nd pallet from the back of the truck, 2/3 of the way up, facing the doors. The RTL should be close to the center door seam for best cellular connection.
3. Load the last pallet.



Front of shipping card



Back of shipping card



Adhesive tape

Device Placement Inside a Box

1. If you are required to place the logger inside a box, cut the shipping card in half at the perforated fold line
2. Insert the top half inside the box so the logger is with the product
3. Remove the paper backing from the adhesive tape on the bottom half of the shipping card
4. Attach the bottom half of the shipping card on the outside of the box. This notifies receivers where to find the logger when the load arrives
5. Place the box on top of the pallet



Note: Logger might not connect to cellular network and upload data if it is inside a box and surrounded by other pallets. Data will be stored in memory until the logger connects to a cellular network and transmits data to the UBQ Cloud Service platform.

Technical Support



800-390-0804
+1-925-249-2250
Option 4 Cloud Services



techsupport@deltatrak.com
Technical Support
dtcloudservices@deltatrak.com
Cloud Services



DeltaTrak Corporate

📍 P.O. Box 398 Pleasanton CA 94566
☎️ (925) 249-2250 (800) 962-6776
💻 www.deltatrak.com

DTI Mexico International

📍 Guadalajara, Mexico
☎️ +52-33-3188-3161 / 3671-2190
💻 www.deltatrakmexico.com

DTI South America SA

📍 Santiago, Chile
☎️ +562 2946 5611 📠 +569 7477 1061
💻 www.deltatraksouthamerica.com

DeltaTrak Canada Limited

📍 Milton, Ontario
☎️ +1 416 988 1507 +1 905 400 9703
💻 ca.flashtrak.com